

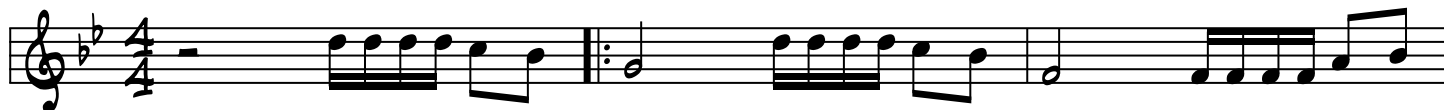
V'NOMAR

R' SHLOMO CARLEBACH
(INTRO BY EITAN KATZ)

INTRO

G MIN

F



C MIN

F

G MIN

G MIN



4

(A) G MIN

D⁷

G MIN



D⁷

G MIN

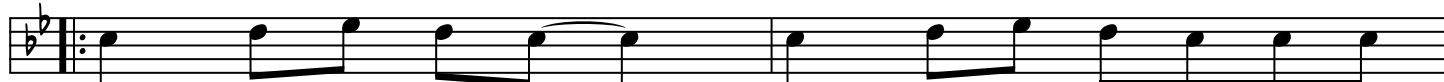
D⁷

G MIN



10

(B) C MIN



C MIN

B^b

C MIN

E^b

F

G MIN



14